

SBANG *Group*

waste to Values



Contents

1 **SBANG PRIDE**

2 **SBANG OVERVIEW**

3 **SBANG BUSINESS AREAS**

4 **SBANG SOLUTIONS AND SERVICES**

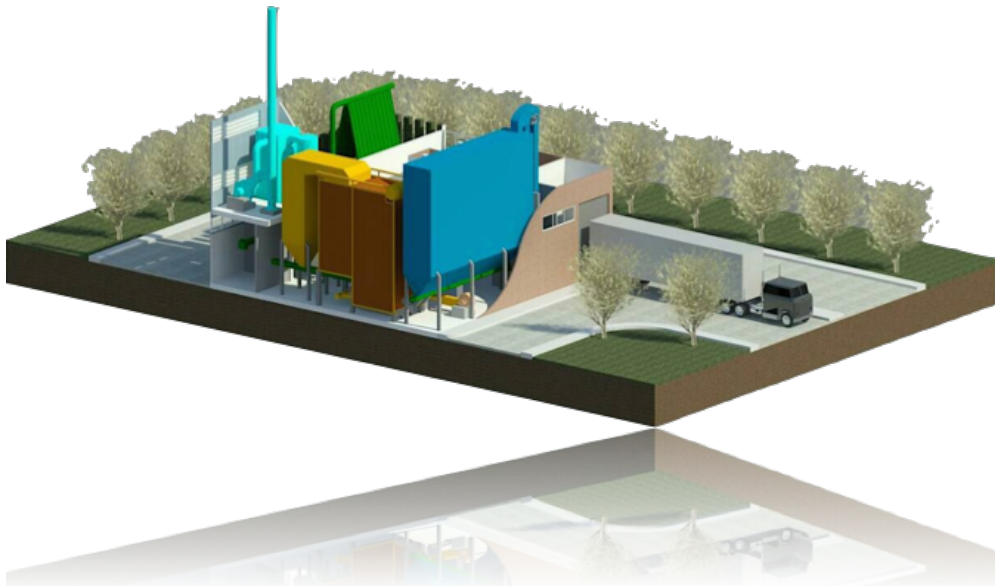
5 **SBANG CULTURAL VALUES**

6 **SBANG CORPORATE SOCIAL RESPONSIBILITY**



1 SBANG Pride

*“We are proud that our **BIOMASS** and **WASTE** to **ENERGY** power plants are part of a driving force to the global sustainable energy development.”*



2 SBANG Overview

Establishment: 2005

Founder: Mr. Saithsiri Saksitthisereekul

Business Categories: EPC turnkey system integrator for biomass power plant and waste-to-energy plant. Invest and operate power plants

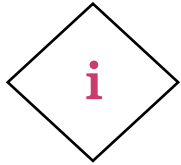


SBANG started business as a subcontractor and later became an EPC turnkey service provider. We are well-known as turn-Key system integrator for renewable power plants for over a decade.

Our focus is on thermal power plants using biomass such as empty-fruit bunch, rubber tree roots & stumps, rice husk, corncobs etc. as well as RDF (Refuse- derived fuel) from municipal waste and industrial waste.

3 SBANG Business Areas

3 Key business areas;



Invest in, own and operate renewable power plant projects.



EPC turn- key system integrator service for biomass power plants and waste to energy power plants.



Engineering service and turn-key system integrator service Refuse-Derived Fuels (RDF) processing plants.



4 **SBANG Solutions and Services**

“ Our service as turn-key system integrator comprises of (but is not limited to);

1

**CONCEPTUAL AND
DETAILS DESIGN**

2

**EQUIPMENT
& PROCESS
PROCUREMENT**

3

**CONSTRUCTION
AND ERECTION**

4

**EQUIPMENT
&INSTRUMENT
INSPECTION AND
TEST**

5

**PLANT
COMMISSIONING
AND PERFORMANCE
TEST**

6

**OPERATION AND
MAINTENANCE
SERVICES**



Photo by Aekavit B.



At **SBANG**, we create the culture and the environment that encourage staffs to deliver results and work happily with the schedule. Sharing and giving feedback session is also welcome at SBANG. We cultivate mindfulness and inner growth approach and encouraging six dimensions of wellness amongst our staffs.

As we believe that happy staffs help stimulate new ideas and improvements in response to provide best performance as well as to survives economics turbulence.



Happy Organization

Sharing and Feedback



Improvement and New ideas



6 SBANG Corporate Social Responsibility



SBANG product and service connect with social and environment

SBANG is not only striving for economical benefit but we aim to raise the well-being of local communities where our plants are located.

We have initiated a voluntary power plant fund and let the local community manage the fund for the best interests of themselves.

Furthermore, **SBANG** has supported local agencies to develop their projects which help to support promotion of agricultural improvement that enhance farmers' livelihood and income.



**Provided
Community
Health Check up**



**Supported
forestation of
local community**



**Ask for blessing
from elders in
Songkran
Festival**